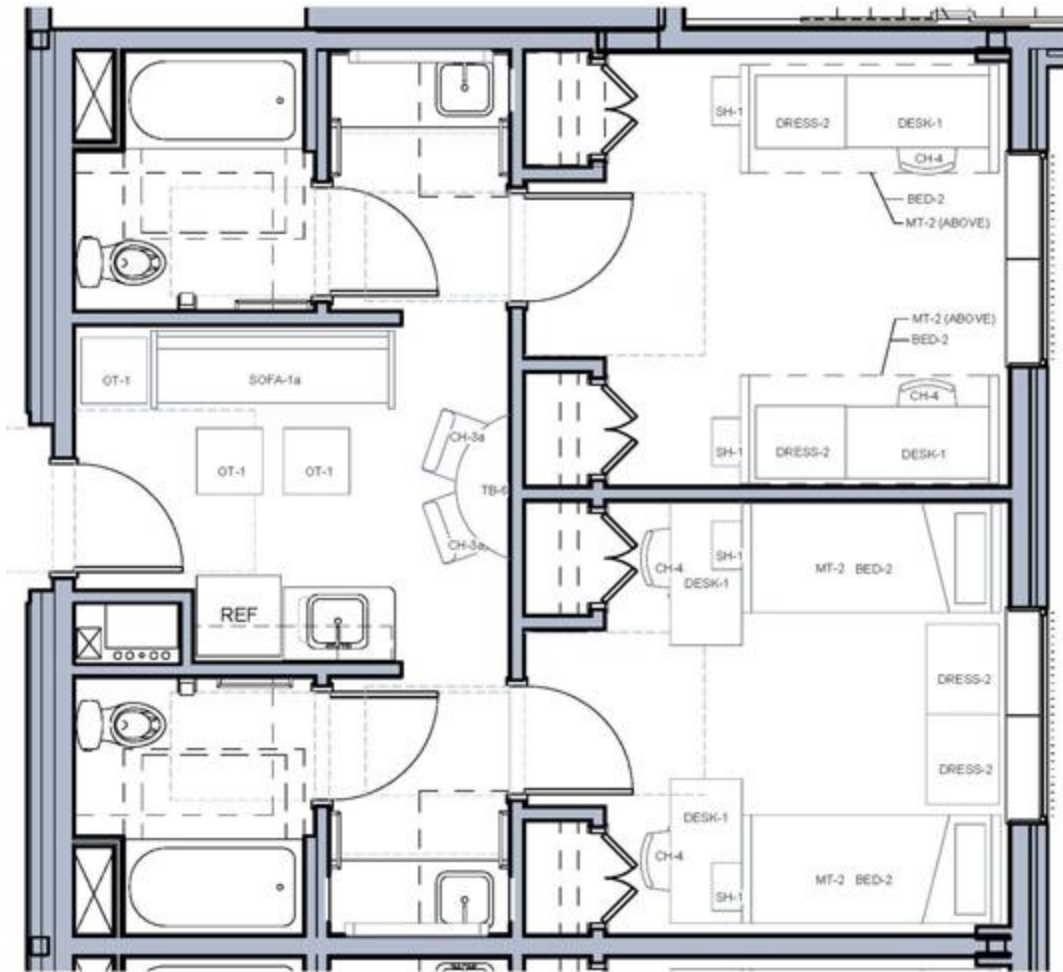


Harris-Stowe State University's newest residence hall opened fall 2011 and includes 200 beds. All freshmen will enjoy suite-style facilities, which include a furnished living room, kitchenette, dining area and private bathrooms. Some of the suites are single-bed suites, with a private bedroom for each student, and others are double-bed suites in which two students share a bedroom. Scroll down to see the different suite layouts. Every floor includes a lounge, and studying is made easy with two quiet study rooms in each wing.

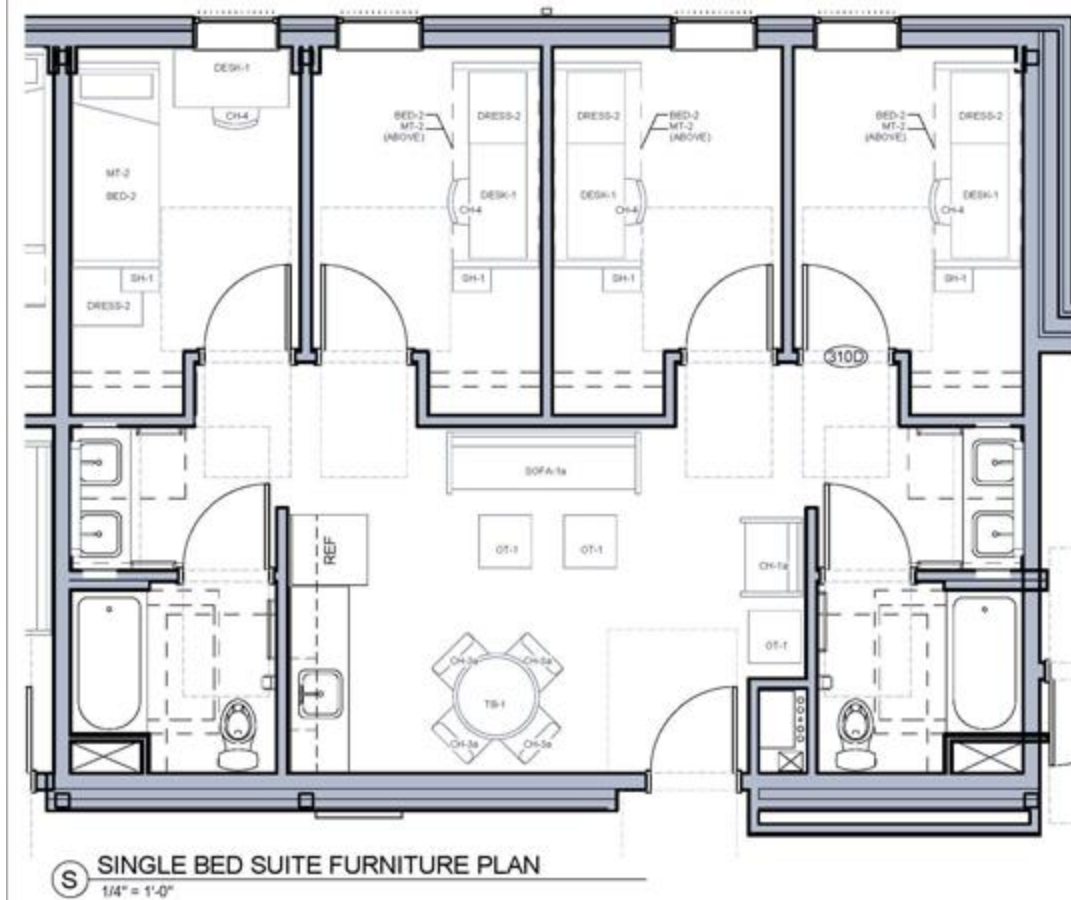
Students need not worry about trudging through the snow or rain to enjoy a meal as the new residence hall houses a state-of-the-art campus dining facility, which includes a private meeting room. Other building amenities include a cardio fitness room, laundry facility, mailboxes, community kitchen, 24-hour vending and a public safety station, all located on the ground floor. The Dr. Henry Givens, Jr. Administration Building, which houses most classes, is only a two-minute walk from both residence halls.





D DOUBLE BED SUITE FURNITURE PLAN
 1/4" = 1'-0"

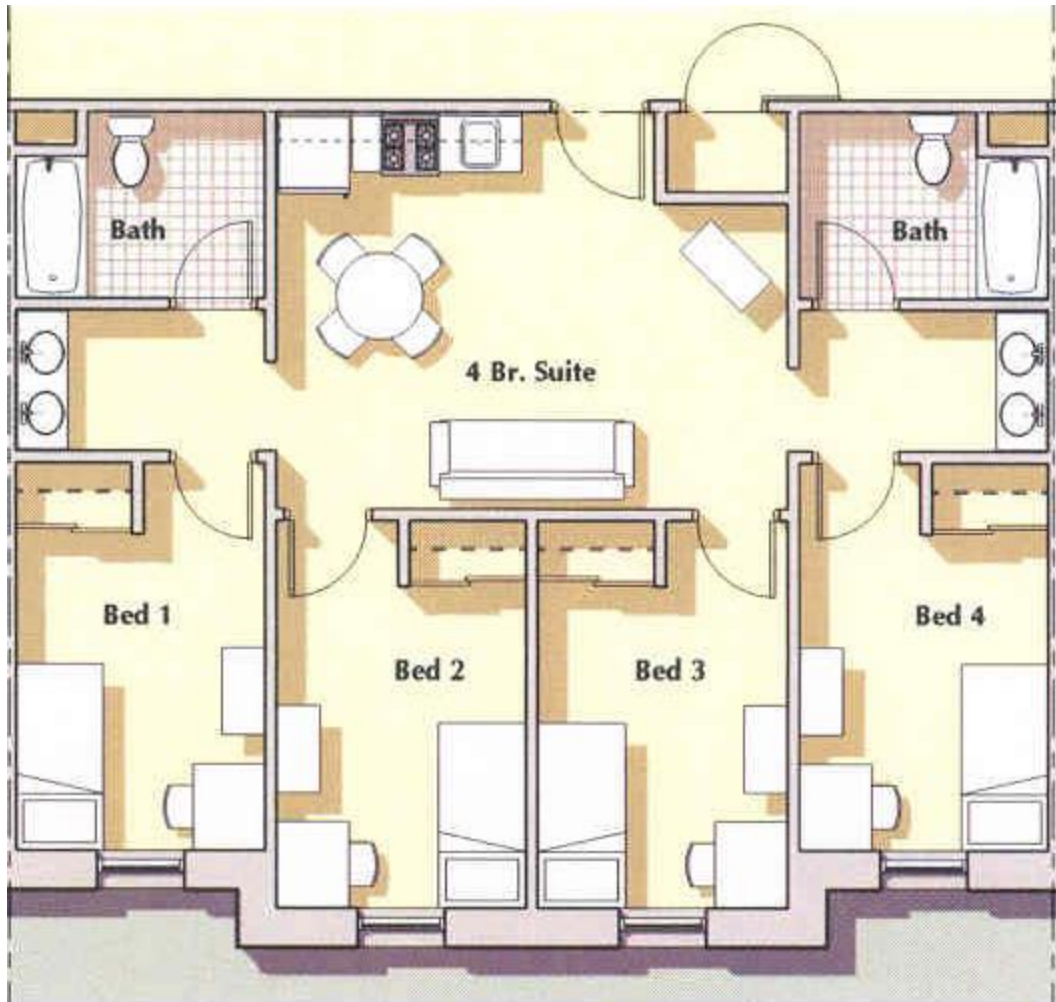
The Bosley Hall has a combination of single and double-bedroom suites. The above layout illustrates a double-bedroom suite in which two residents share a bedroom.



The Bosley Hall has a combination of single and double-bedroom suites. The above layout illustrates a single-bedroom suite in which each resident has a private bedroom.

Rev. Dr. William G. Gillespie Residence Hall and Student Center. Each suite includes private bedrooms, furnished living room, kitchenette, dining area and private bathroom. Gillespie Hall and Student Center provides a variety of amenities, including a Game Room, with two large-screen TVs, billiards, video game system; a computer laboratory/study, the main campus Bookstore, and vending machines which serve both the Student Center and Residence Hall. Just outside Gillespie Hall and Student Center are the following: picnic tables; a barbecue grill; a sand-pit volleyball court; and a mini-amphitheater.





All of Gillespie Hall's suites are laid out as seen above, with private bedrooms for all.